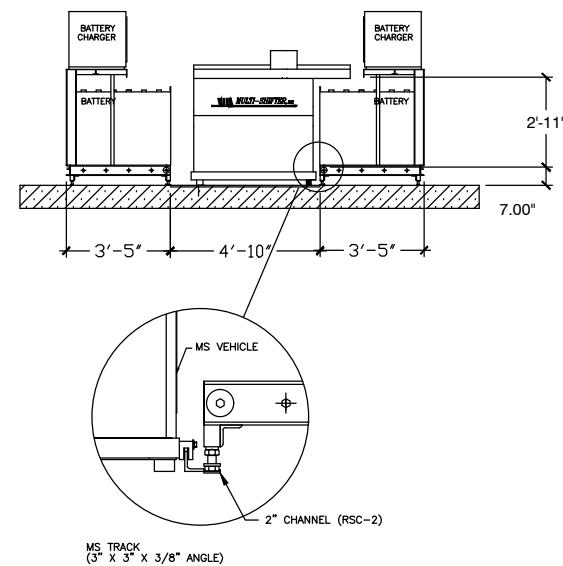


**TRACK/STAND DETAILS**  
N.T.S.



GENERAL NOTES:  
ALL DIMENSIONS UNLESS OTHERWISE SPECIFIED ARE IN INCHES.  
BATTERY DECALS SHOULD BE LOCATED AWAY FROM AREA OF MAGNET CONTACT.

SYSTEM SPECIFICATIONS:  
TO ENSURE PROPER SYSTEM OPERATION  
CONCRETE LOAD CAPACITY - 3000 PSI  
FLOOR SURFACE AT DRIVE WHEEL MUST BE CLEAN AND DRY.  
CHARGER HOOKUP FOR MS4-14 230/480 VOLT AC SINGLE PHASE, 7.0/3.0 AMP.  
CHARGER SHELF - 24" DEEP  
DOUBLE STACKING OF CHARGERS ACCEPTABLE.  
QUANTITIES AND DIMENSIONS MAY AFFECT CHARGER TO BATTERY RELATIONSHIP.  
ALTERNATE BATTERY STORAGE CONFIGURATIONS AVAILABLE UPON REQUEST.  
VEHICLE GUIDE PATH MUST BE LEVEL + OR - 1/4" IN 10 FEET.

EQUIPMENT DESCRIPTION										
MS4-14-A1-6.5-23.5-MAG-DC										
BATTERY DESCRIPTION										
TYPE	TRUCK MAKE & MODELS	QTY. TRUCKS	TOTAL BATTs.	QTY. STORED	FUTURE STORED	ROLLER HEIGHT	BATTERY WEIGHT	BATTERY LENGTH	BATTERY WIDTH	BATTERY HEIGHT
A	18-85-21	9	18	9	X	X	X	38.25	24.56	22.63
B	18-85-23	13	26	13	X	X	X	38.25	26.88	22.63
C	12-85-13	7	14	7	X	X	X	30.63	12.69	23.26
D	X	X	X	X	X	X	X	X	X	X
E	X	X	X	X	X	X	X	X	X	X
F	X	X	X	X	X	X	X	X	X	X
TOTAL		29	58	29	X					

DRAWING MUST BE APPROVED PRIOR TO FABRICATION OF THE SYSTEM.

SIGNED BY: \_\_\_\_\_

DATE: \_\_\_\_\_

<b>MULTI-SHIFTER, INC.</b>	
SINGLE LEVEL DC POWERED DOUBLE SIDED	
SCALE: None	DATE:
DRAWN BY: T.Jones	REVISED:
DISTRIBUTED BY:	DRAWING NO.